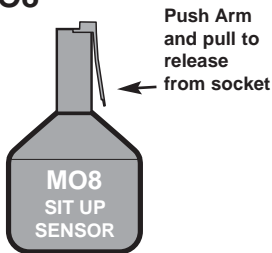
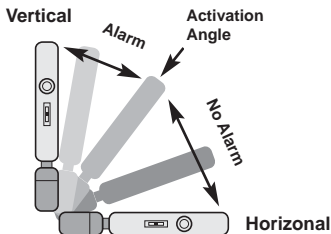


Malem Sit Up Sensor

MODEL MO8



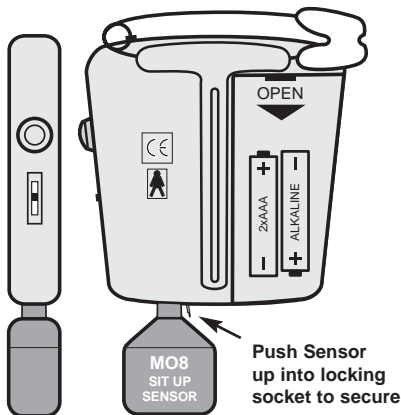
The Alarm will activate if the users movement make the sensor stand upright.

For best results:

1. Attach alarm inside a Pyjama Top pocket or,
2. Attach on the inside of a T-Shirt Collar or
3. Clip alarm to an elasticated bandage around the thigh.

To Stop Alarm:

1. Place Sit Up Sensor in horizontal position and press the reset button on the side.
2. Remove Sit Up Sensor from alarm and press the Reset button.



Sit Up Sensor can be used with all Malem Alarms